



A CLASSIC BEAUTY



Among its many unique qualities, the feature wall in this hearth room uses poured concrete to form the hearth and the step up into the kitchen. A second slab of concrete was used for the mantel.



The beautiful main entrance of this home features a thoughtfully planned, open space that is its own feature and guides you into the sunken great room.



Just a step up from the hearth room leads you to this bright, open kitchen, complete with a coffee & wine bar for entertaining.



Just beyond the pocket doorway next to the wall oven is a huge pantry, complete with a double refrigerator/freezer combination.

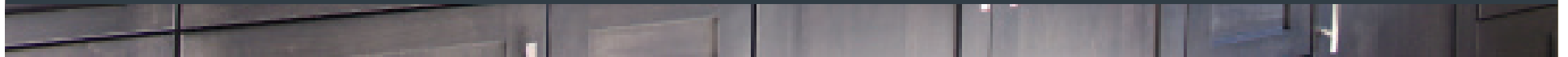
The concrete island features a waterfall edge design which used superior craftsmanship to pour the concrete in place. The cabinet used to support the island top actually was integrated into the concrete formwork.







The master bath features a his and hers sink, built in television, counter top storage, and optimal vanity lighting. The stone accent wall also carries through to the floor of the roll-in shower.

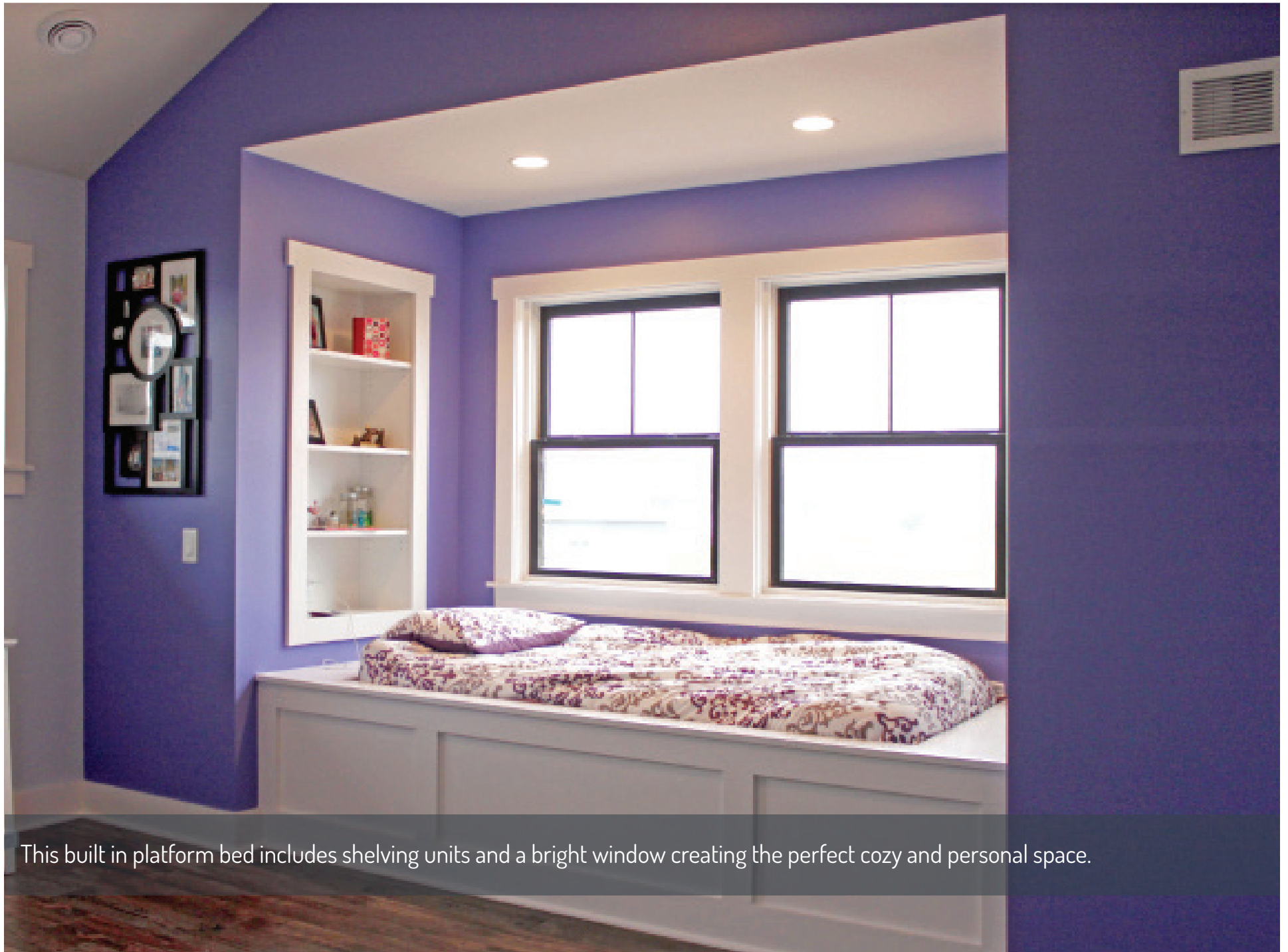






Also taken from Sarah Susanka is the idea of an “away room.” This away room is featured just at the top of the stairs on the second floor. As Susanka states, it is “a room to escape to, that is near the common areas of the home, but that offers some privacy from the noise and socializing of the other spaces.”

This room connects the two short hallways that lead to the children’s bedrooms. It houses a television, two couches, and a coffee table, making it the perfect getaway from the hustle and bustle of the main level. A sliding barn door and two pocket doors (not shown in photo) add acoustic privacy from the away room to the main level and the four adjacent kids’ rooms.



This built in platform bed includes shelving units and a bright window creating the perfect cozy and personal space.



The modern, industrial style is carried through the entire home, including the basement, which features a polished and stained concrete floor, exposed metal duct work, and an exposed steel H-column. The counter top of the bar uses the same concrete finish as is featured in the upstairs hearth room. A wine room is located to the left.